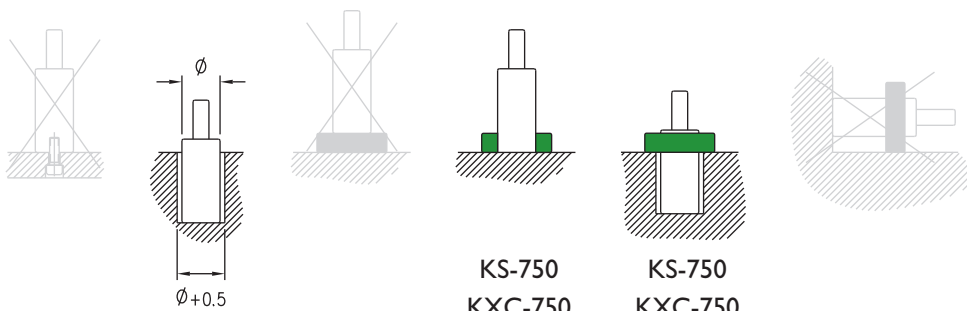


	C	L	A	daN	
	mm	mm	mm	(20°C, 150bar)	
Dimensiones	KF-750-12	11	56	45	0,41
Dimensions	KF-750-19	18	70	52	0,44
Massgangen	KF-750-25	24	82	58	0,45
Dimensions	KF-750-38	37	108	71	0,58
Dimensioni	KF-750-50	49	132	83	0,67
Medidas	KF-750-63	62	158	96	0,75
	KF-750-80	79	192	113	0,87
	KF-750-100	99	232	133	1,03

Consultar carreras fuera de catálogo / Other strokes can be produced on request
 Otras fuerzas bajo demanda / Alternative forces upon request

Ejemplo de pedido / Ordering example: 4 x KF-750-25



Max. Recomend. 1,6 m/s
 20-100 golpes/min
 20-100 strokes/min

20°C / 68°F

20% min

N₂

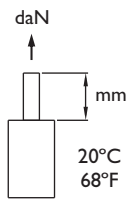
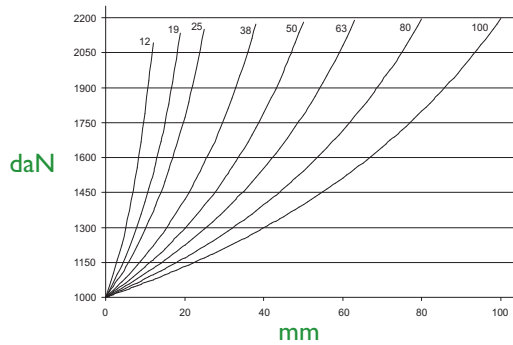
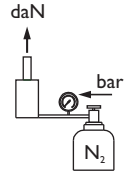
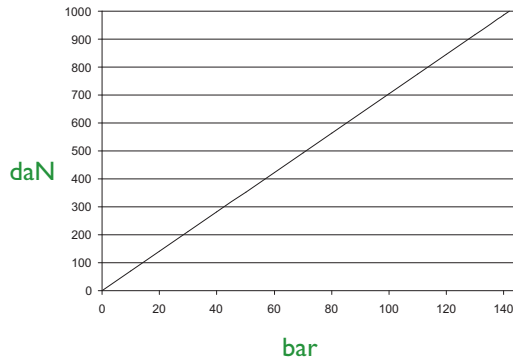
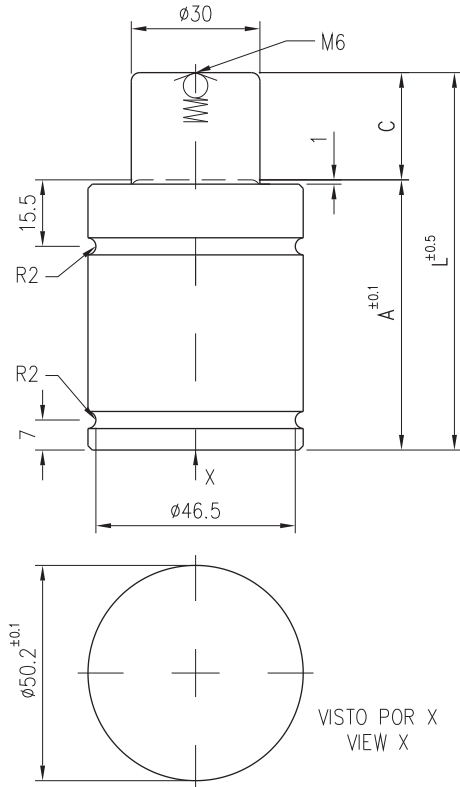
Max 150bar / 2176psi
 Min 20bar / 290psi

Max 80°C / 176°F
 Min 0°C / 32°F

> 80°C (176°F) → Kit Viton

+1°C / +1,8°F = +0,34%

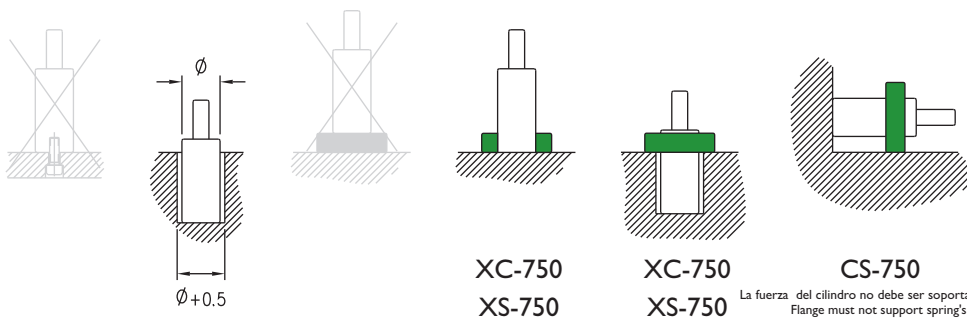
Repair Kit
KIT KF-750



	C	L	A	daN	
	mm	mm	mm	(20°C, 140bar)	
Dimensiones	KF-1000-12	12	62	50	0,64
Dimensions	KF-1000-19	19	76	57	0,69
Massgangen	KF-1000-25	25	88	63	0,74
Dimensions	KF-1000-38	38	114	76	0,85
Dimensioni	KF-1000-50	50	138	88	0,95
Medidas	KF-1000-63	63	164	101	1,06
	KF-1000-80	80	198	118	1,20
	KF-1000-100	100	238	138	1,35

Consultar carreras fuera de catálogo / Other strokes can be produced on request
 Otras fuerzas bajo demanda / Alternative forces upon request

Ejemplo de pedido / Ordering example: 4 x KF-1000-25



Max. Recomend.
1,6 m/s
20-80 golpes/min
20-80 strokes/min

20°C
68°F

20% min

N₂

Max 140bar
2030psi

Min 20bar
290psi

Max 80°C
176°F

Min 0°C
32°F

> 80°C (176°F) → Kit Viton

+1°C / +1,8°F = +0,34%

Repair Kit
KIT KF-1000